



ARC: A navigation model that aims to optimize equitable Access to Resources in the Community for primary care patients.

The **ARC** team would like to **THANK YOU** for participating in the **ARC** study!

Total number of patients referred and enrolled

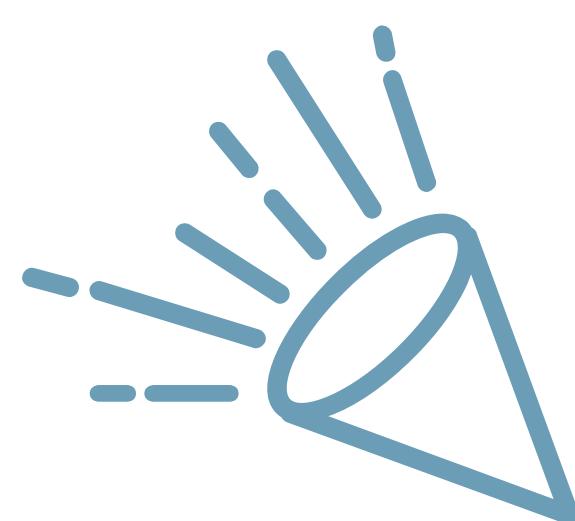
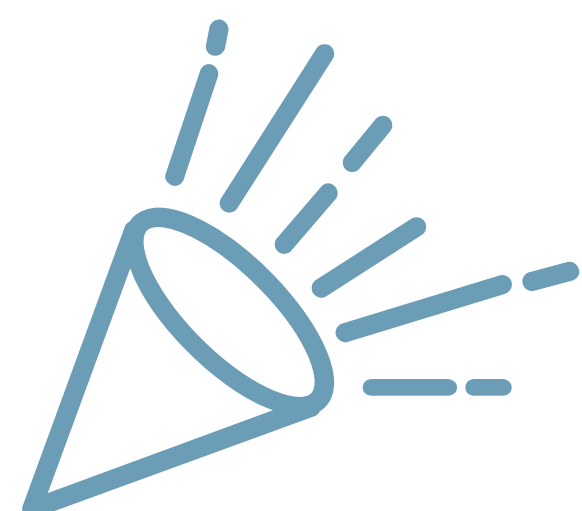
458 patients were referred to **ARC**
326 (71%) agreed to participate



Next steps



We are delighted to announce that we are working to integrate the **ARC** navigator model into the **Ontario Health Team** structure!



ARC Resource List

ARC connected study patients to **211** resources!
Expect to receive that **ARC** community resource list in **March 2020**

ARC aims to find the best fitting resource for each individual



Kayla

I would like to access a recreational resource for my autistic child

Ausome Ottawa is a registered charity that enriches the lives of children with autism and their families through sport and recreation.*



3
George

I would like to have peer support from other single fathers

The Canadian Centre for Men and Families (CCMF) provides therapy and counselling, peer support, a legal clinic, fathering programs, mentorship and support services for male victims of trauma and violence.*

**Information taken from the resource website*



Questions?
Contact us:

Ottawa

Simone Dahrouge, PhD Principal Investigator
sdahrouge@bruyere.org

Sudbury

Alain Gauthier, PhD
Co-Principal Investigator
agauthier@laurentian.ca

Patrick Timony, MA
Study Coordinator
pe_timony@laurentian.ca

Visit our website:
www.arcnavigatorproject.com

Access to Resources in the Community
Accès aux Ressources Communautaires

ARC MODEL ABOUT RESEARCH TEAM RESOURCES CONTACT US

Welcome to the ARC Research Project!



ARC: The Model
An integrated patient navigation model for your community



ARC: The Research
Feasibility and randomized controlled trial information and results



ARC: Resources
News, information, presentations and publications!